

From: **Dahl, Amanda C** [dahla@purdue.edu](mailto:dahla@purdue.edu)   
Subject: Double-Dual Weekend on Tap for Purdue Wrestlers  
Date: February 7, 2019 at 4:53 PM  
To: undisclosed-recipients;



**Double-Dual Weekend on Tap for Purdue Wrestlers**



Feb. 7, 2019

**DUAL INFORMATION**

**No. 20 Purdue (5-7, 2-4 B1G) vs. No. 25 Stanford (7-1, 1-1 Pac-12)**

Friday, Feb. 8 / 7 p.m. ET / BTN Plus on BTN2GO

Holloway Gymnasium / West Lafayette, Indiana

[Purdue Notes \(PDF\)](#) / [Results](#) / [Watch on BTN Plus on BTN2Go](#) / [Promotions](#)

**No. 20 Purdue vs. No. 18 Rutgers (9-5, 2-3 B1G)\***

Sunday, Feb. 10 / 1 p.m. ET / BTN Plus on BTN2GO

Holloway Gymnasium / West Lafayette, Indiana

\*Rutgers wrestles at Indiana on Friday

[Results](#) / [Watch on BTN Plus on BTN2Go](#) / [Promotions](#)

**WEST LAFAYETTE, Ind.** - The Purdue wrestling team returns to Holloway Gymnasium for a double-dual weekend. The No. 20 Boilermakers will Hammer Down Cancer in a non-conference clash with No. 25 Stanford at 7 p.m. ET on Friday. A Big Ten Conference battle awaits on Sunday against No. 18 Rutgers starting at 1 p.m.

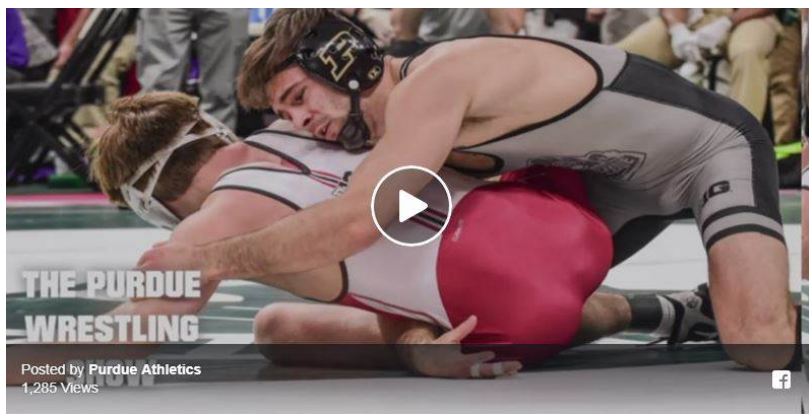
Specialty singlets will be worn and auctioned off during Friday's Hammer Down Cancer dual. All proceeds from the singlet auction will benefit the Purdue Center for Cancer Research. Bidding starts at \$30 and will go through intermission. Bids can only be accepted in person and on site. Payment can be made by cash or check.

Over the past three years, the singlet auction has raised over \$4,000 for the Purdue Center for Cancer Research.



On Thursday's Purdue Wrestling Show, head coach [Tony Ersland](#) and host [Amanda Dahl](#) broke down three key matches in the Stanford dual at 125, 174 and 197 pounds; Rutgers visiting Holloway; and looked back at the tight matches from the Minnesota dual.





PURDUE LINEUP				
WEIGHT	NAME	YEAR	RECORD	HOMETOWN
125	No. 19 <a href="#">Devin Schroder</a>	RS So.	17-7	Grand Rapids, Mich.
133	No. 14 <a href="#">Ben Thornton</a>	RS Sr.	15-5	Stoddard, Wis.
	<a href="#">Bjorn Schroeder</a>	RS Fr.	8-7	Bozeman, Mont.
141	<a href="#">Nate Limmex</a>	RS Jr.	14-10	Ada, Mich.
	<a href="#">Alec White</a>	RS Fr.	7-7	New Palestine, Ind.
149	<a href="#">Parker Filius</a>	RS Fr.	9-13	Havre, Mont.
	<a href="#">Austin Nash</a>	RS Jr.	4-12	Florham Park, N.J.
157	No. 13 <a href="#">Griffin Parriott</a>	RS So.	11-6	New Prauge, Minn.
165	<a href="#">Cole Wysocki</a>	RS Jr.	7-16	Edwardsville, Ill.
	<a href="#">Tanner Webster</a>	RS Fr.	5-7	Crawfordsville, Ind.
174	No. 11 <a href="#">Dylan Lydy</a>	RS Jr.	18-6	Indianapolis, Ind.
184	<a href="#">Max Lyon</a>	So.	18-7	Dyersville, Iowa
	<a href="#">Jared Florell</a>	RS Fr.	10-4	Ham Lake, Minn.
197	No. 12 <a href="#">Christian Brunner</a>	Jr.	15-6	East Dundee, Ill.
285	<a href="#">Jacob Aven</a>	RS Sr.	8-15	Zionsville, Ind.

Team rankings via NWCA Division I Wrestling Coaches Poll (2/5); individual rankings via InterMat (2/5)

## AMANDA C. DAHL

### PURDUE ATHLETICS

Supervisor of Wrestling Operations

Associate Strategic Communications Director, Wrestling

O 765.494.0529 | C 712.251.9271